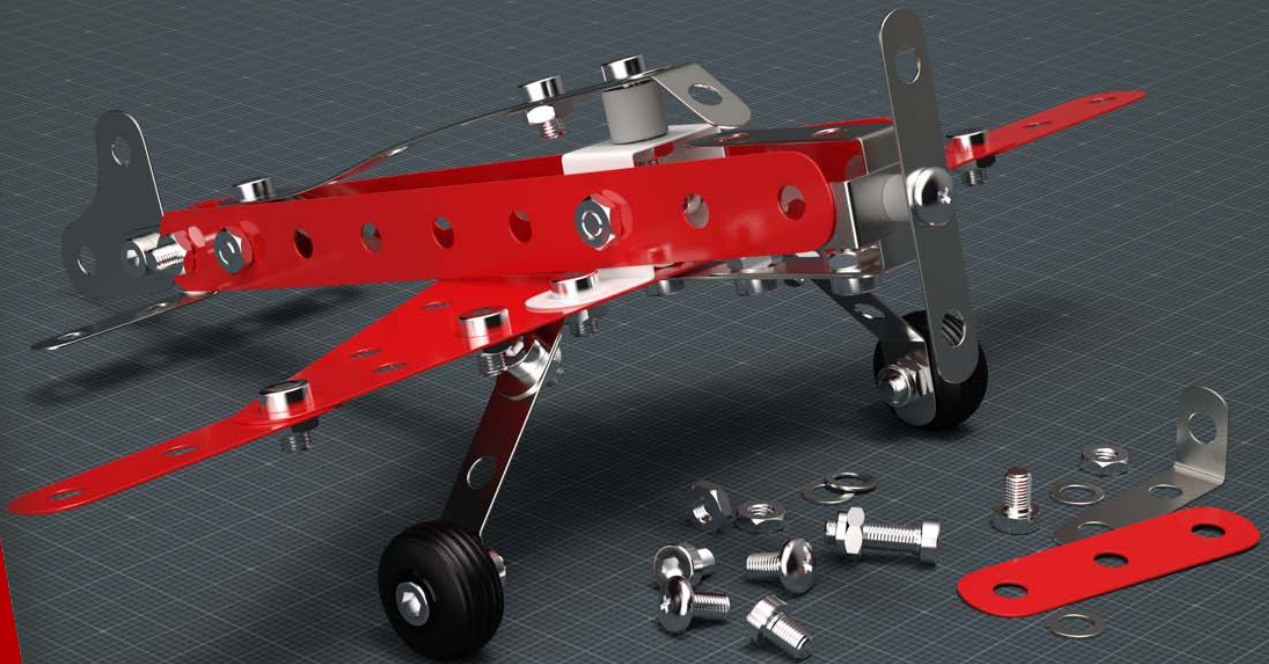


THEA RENDER

physically-based unbiased, biased & gpu render engine



BENCHMARK TOOL QUICK GUIDE

www.thearender.com/benchmark

Version: TheaBenchmarkTool_v2.0.001.1814

INTRODUCTION

Thea Render Benchmark Tool profiles system rendering performance using Thea Presto engine which combines both CPU(s) as well as NVIDIA based graphics adapter(s) for high performance physically based rendering. This tool renders a series of Thea Render benchmark scenes and generates a performance score that can be submitted to the Thea benchmark global ranking page. At the global ranking page you can review and compare your system performance score with other user submitted scores.

Minimal system requirements:

- Microsoft Windows Vista/7/8/10 - 64bit, AMD/INTEL CPU that supports SSE2 instruction set
- NVIDIA graphics adapter (compute capability 2.0 or higher) with a driver that supports CUDA 6.5 and above for Presto GPU

Find more details on Presto engine [here](#). All available software is subject to our [end user license agreement](#).

INSTALLATION INSTRUCTIONS

Windows

Download the tool for windows and run the installer. Then open the TheaBenchmarkTool folder and run the TheaBenchmark.exe file.

MacOSX

Download the tool for MacOSX , open the dmg file and then run the TheaBenchmark.pkg installer. Then go to Applications and run the TheaBenchmark.app file.

USAGE STEPS

The benchmark tool (shown in Figure 1) analyzes performance of your system by rendering four benchmark scenes (Caustics, Instancing, Meccano, SSS) for a period of two minutes per scene. These scenes are available within the benchmark tool folder which automatically uses them.

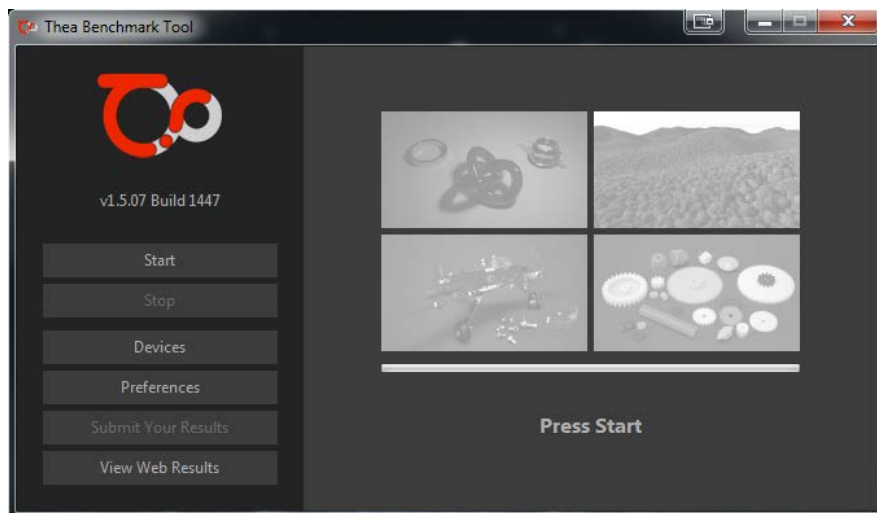


Figure 1: Thea Render Benchmark Tool Window

Upon launch of the Thea Benchmark Tool and during initialization, your system is profiled for available CPU and GPU resources. You can press the **Devices** button for seeing the available devices and adjust their priorities.

If you do not have a compatible NVIDIA GPU or if your GPU driver does not support CUDA 6.5, the benchmark tool will detect and use CPU devices only. If your GPU is indeed compute capability 2.0 compatible and there is a driver available on the NVIDIA web page that support CUDA 6.5 and above, then please perform an update of your GPU driver.

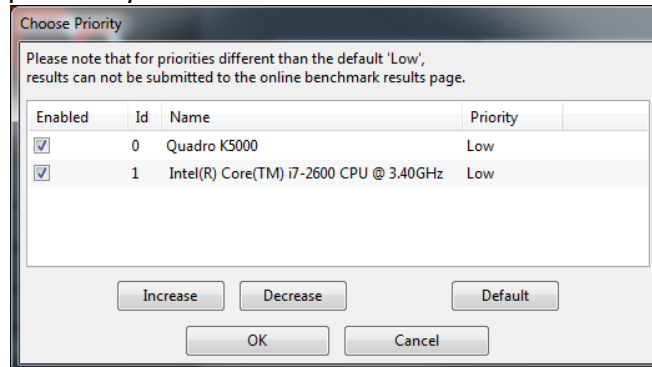


Figure 2: Devices and Priorities selection

Please note that in case the priorities are changes to a different option that the default 'Low' results of the benchmark cannot be submitted online.

The **Preferences** button allows you to change the location of the saved results (scores and rendered images).

To begin the benchmarking process press on the **Start** button and allow for the benchmark to run uninterrupted. If at any point you wish to stop the benchmark press the **Stop** button (no results will be generated). During process, a progress bar informs you for the stage of the procedure and upon a scene completion the corresponding rendered image will appear at the screen. You can click on it to preview it at its actual resolution.

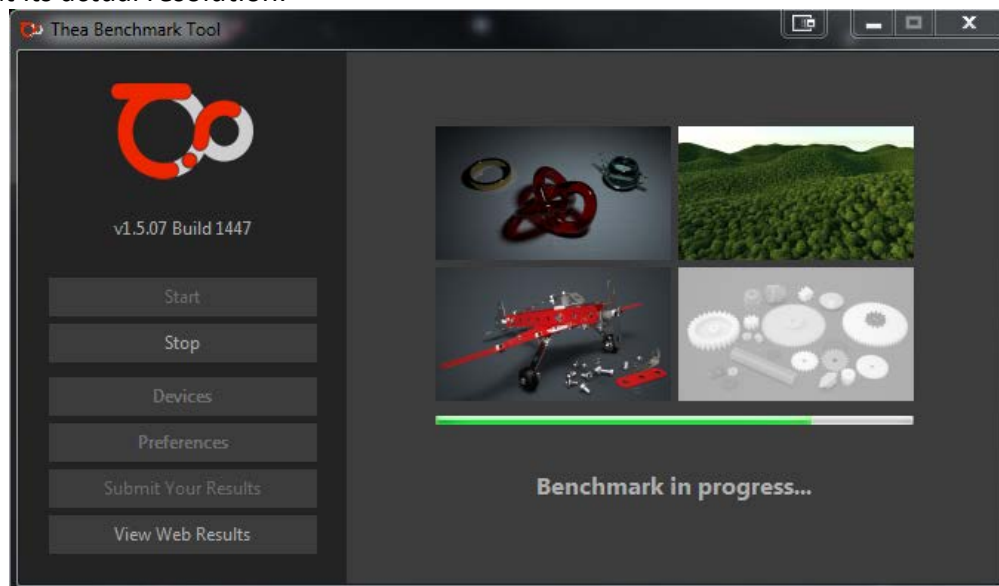


Figure 3: Benchmark in progress with three from four scenes being completed

At the end of the procedure the final score will appear. The Final score is calculated based on the final Samples per Pixel per scene and weights assigned to each scene based on their complexity and can be used as the final indicator of system performance. To check how your system ranks amongst other users, you can click on the **View Web Results** button which will open your browser and direct you to the benchmark landing page containing all user submitted scores:

<https://www.thearender.com/benchmark>

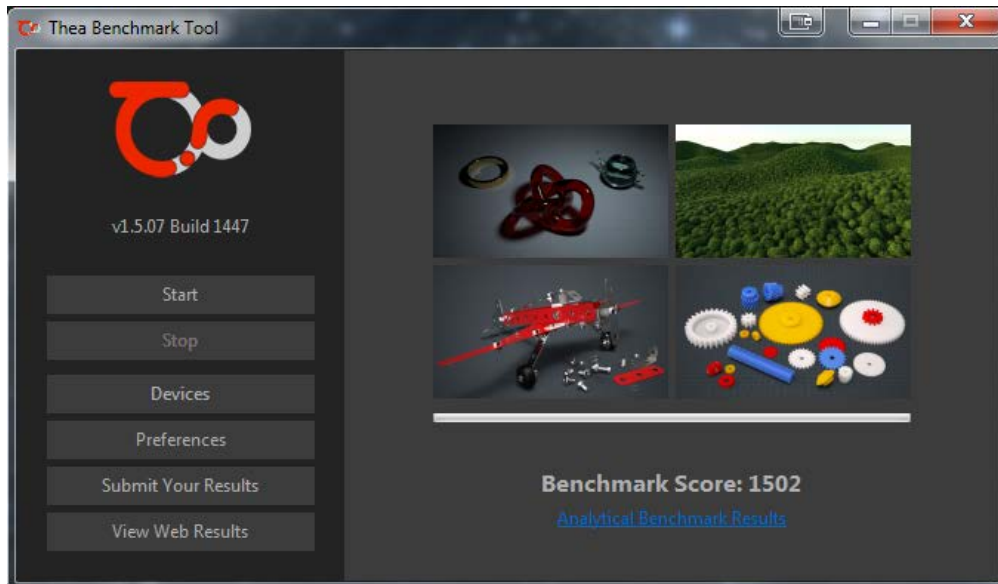


Figure 4: Benchmark completed

Please note that apart from the final score a log file with analytical results is also stored locally on your system and you can press Analytical Benchmark Results button for previewing them.

Upon completion of the benchmark process, you can also submit if you wish your results using the **Submit Your Results** button which will then popup a dialog which will inquire for a username (with Latin characters/no special symbols) and an email for valid result submission. An email for confirmation will be also sent to you upon successful results submission.

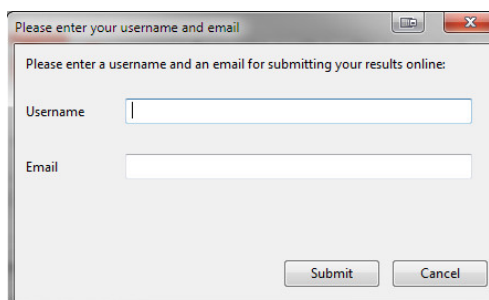


Figure 5: Information needed for submitting results

At the results page you can locate your username, Operating System, your machine configuration and its ranking based on the final score.

If you have any questions or issues related to the Thea Benchmark Tool please contact us at contact@thearender.com.